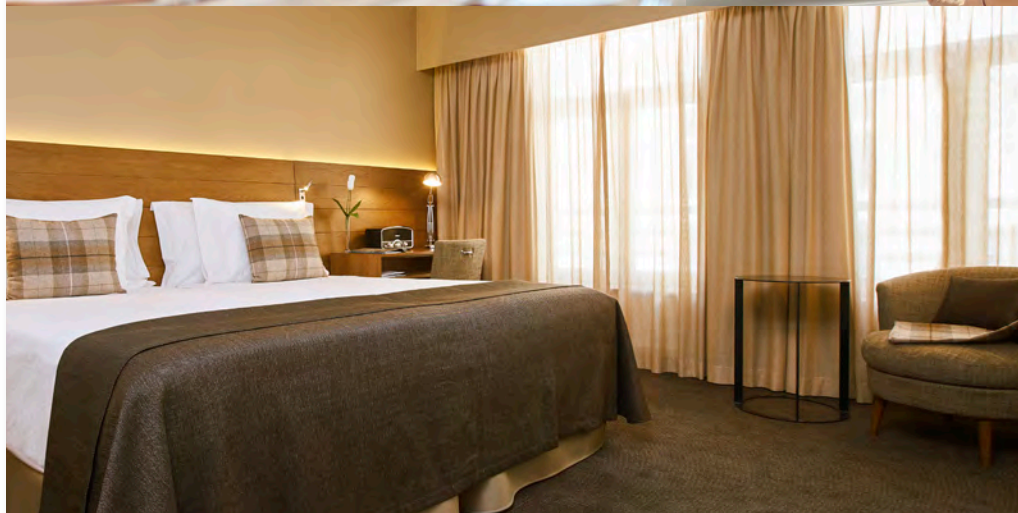
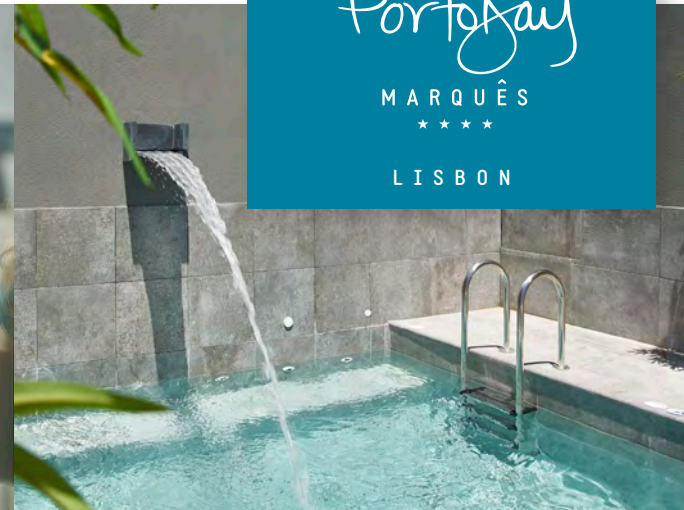
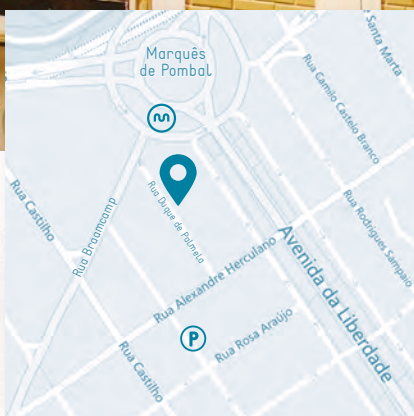


"home is also a feeling . . ."



rua duque de palmela 32, 1250-098 lisboa - portugal . marques@portobay.pt . + 351 210 032 700 . [reservations : book@portobay.pt](mailto:reservations:book@portobay.pt) . + 351 291 708 750

> www.portobay.com      



PORTOBAY MARQUÊS

Is the PortoBay Hotels & Resorts four-star hotel in Lisbon. Located on Duque de Palmela Street, it is right around the corner from Marquês de Pombal square and just a few steps away from Avenida da Liberdade, near the city's main accesses and a pleasant walk from the city's main attractions such as São Jorge Castle, Restauradores, Rossio, Terreiro do Paço, Chiado, Bairro Alto, Alfama.

The hotel has 72 rooms. Among these, more than a half are junior suites, superior rooms and adjoining rooms that provide comfort and the ideal space for families and those seeking well-being. The restaurant, the terraces, the "petite" but charming outdoor pool with jets, the solarium, the indoor and outdoor gym, the sauna and the Turkish steam bath invite you to round out a great day.

72 suites & rooms

- 22 junior suite > 31-37 m²
 - 21 superior > 24-29 m²
 - 11 classic > 20-22 m²
 - 18 standard > 18 m²
- areas do not include balconies

check-in : 2pm . check-out : 12pm

- > adjoining rooms / family rooms
- > mattresses and mattress toppers (35 cm high)
- > smart TV with 120 channels
- > room service
- > minibar
- > coffee and tea makers
- > wet bar in the junior suites : microwave, fridge and sink
- > heating and air conditioning
- > safe
- > phone
- > USB charger in desk
- > dressing gown and slippers
- > iron and ironing board and other items on request
- > one floor with anti-allergic rooms
- > bathroom with shower or tub, magnifying mirror, hair dryer (2200w) and rituals amenities

note : some services are subject to payment at the hotel

services

- > free wi-fi in the entire hotel
- > 24-hour front desk service
- > concierge
- > laundry
- > babysitting (upon reservation)
- > limited mobility facilities (except pool)
- > parking limited to the size of your car

leisure & well-being

- > lounge area on the rooftop
- > outdoor heated pool with jets : 3.50 x 3.75 m (winter 8am - 6pm . summer 8am - 8pm)
- > pool towels
- > sauna
- > steam bath
- > gym
- > reception lounge
- > library

restaurantes & bares

- > **il basilico** . italian breakfast 7am - 10.30am (saturday and sunday until - 11.00am) lunch 12.30pm - 3pm dinner 7pm - 10.30pm (fridays and saturdays until 11pm)
- > **bar de baixo** . cocktail bar & terrace 10.30am - 11.30pm (fridays and saturdays until 12am) drinks 10.30am-12am snacks 11am-10.30pm
- > **bar de cima** . honesty bar & terrace winter 10h00 - 18h00 summer 10h00 - 22h00

W 9° 09' 00.5" . N 38° 43' 25.9"

- Ⓟ parking > 200 m
- 📍 avenida da liberdade > 130 m
- 📍 historic centre > 1.2 km
- 🚇 subway > 100 m
- ✈️ lisbon airport > 6 km

GDS code : apollo/galileo WV A4811 . sabre WV 45857
worldspan WV 99149 . amadeus WV LIS149 . ODD WV 99149